

1 Year Limited Warranty

MIU LLC warrants this product to be free from manufacturer defect for up to 1 year from the original date of purchase. If a defect is found to exist, MIU will, at its option, either repair or replace the product or the defective component, including labor. Replacement will be made with new or rebuilt product or components. This warranty does NOT cover (a) ordinary wear and tear (such as scratches, dents or stains), (b) impact damage or breakage, (c) heat discoloration, minor imperfections and slight color variations which are a normal part of the craftsmanship, (d) improper cleaning methods causing scratches, or (e) any unit that has been tampered with, (f) damages incurred through improper use and care and (g) faulty packaging by you or mishandling by any common carrier. Failure to follow the accompanying Care and Use instructions or commercial use will void this warranty.

MIUs' sole obligation and your exclusive remedy under this warranty is limited to repair or replacement, at its option, of the defective item. You will be responsible for any shipping and handling fees. Products returned to us that are not found to be defective in material or workmanship will be returned to you. If your particular product is found defective but is no longer available and cannot be repaired, a comparable product, at our discretion will be sent as a replacement. This warranty extends only to the product's original purchaser, US residents only and does not cover damage caused by improper use or accidental damage.

MIU LLC, MAKES NO OTHER WARRANTIES, EITHER EXPRESSED OR IMPLIED, REGARDING THE PRODUCT OR RELATING TO ITS QUALITY, PERFORMANCE, MERCHANTABILITY, OR FITNESS FOR A PARTICULAR PURPOSE, MIU LLC SHALL NOT BE LIABLE FOR INDIRECT, CONSEQUENTIAL OR SPECIAL DAMAGES WHETHER A CLAIM BASED ON CONTRACT, TORT, WARRANTY OR OTHERWISE, IN NO EVENT WILL LIABILITY EXCEED THE ORIGINAL PURCHASE PRICE OF THE PRODUCT. THE DURATION OF ANY IMPLIED WARRANTY WHATSOEVER, INCLUDING BUT NOT LIMITED TO THE WARRANTIES OF MERCHANTABILITY AND FITNESS FOR A PARTICULAR PURPOSE, SHALL BE LIMITED TO THE DURATION OF THE EXPRESS WARRANTY PROVIDED HEREIN. MIU SHALL NOT BE LIABLE FOR ANY INCIDENTAL OR CONSEQUENTIAL DAMAGES WHATSOEVER.

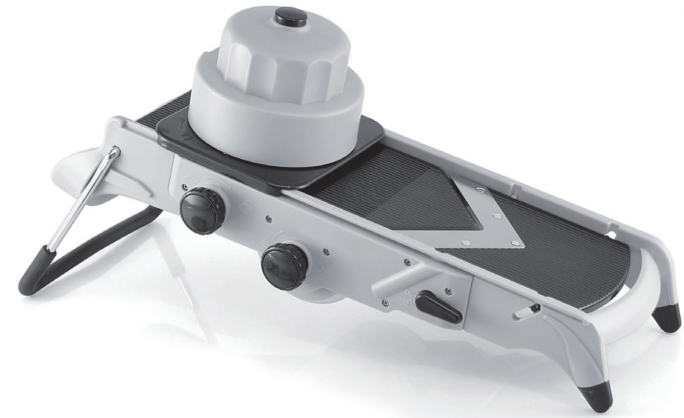
Some states do not allow limitations on how long an implied warranty lasts or the exclusion or limitation of incidental or consequential damages, so the above limitation or exclusion may not apply to you. This warranty gives you specific legal rights, and you may have other legal rights, which vary from State to State.

For first 30 days of purchase. Please return to retailer for replacement.

To process a claim after 30 days:

Please have your purchase information send with your name, physical address, phone number, original purchaser receipt and the safely packaged item prepaid to:

MIU at 441 Costco Drive Tukwila, WA 98188 USA
Customer Service Email: CS@miufrance.com
Return shipping and handling charges may apply.
MADE IN CHINA/ MODEL: 661354

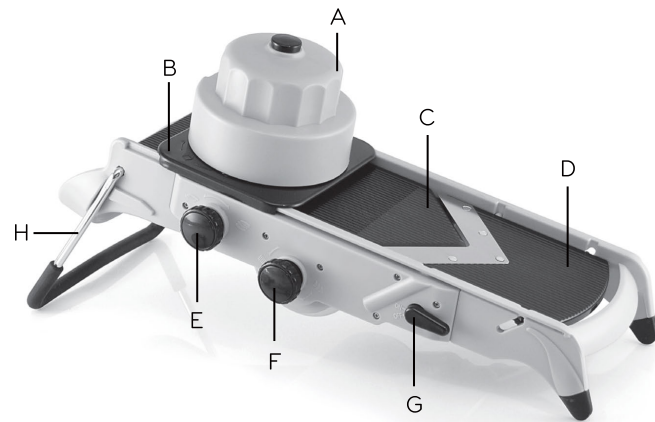


KITCHEN **HQ**

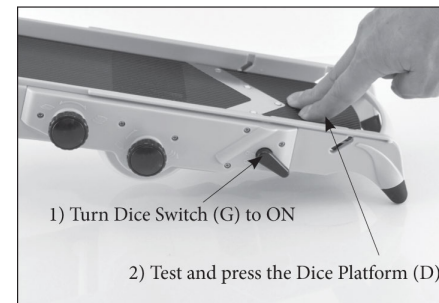
KHQ V-Slicer Mandoline

MODEL 661354

HOW TO USE

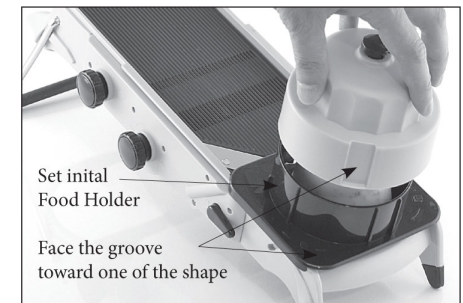


- A. Hand Guard
- B. Food Holder
- C. Slice Platform
- D. Dice Platform
- E. Thickness Dial
- F. Julienne Dial
- G. Dice Switch
- H. Foldable Leg



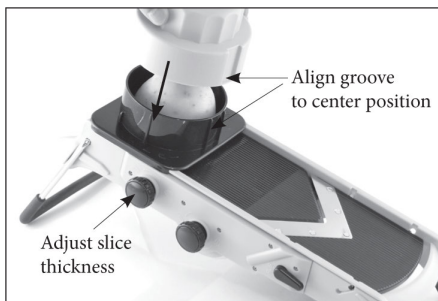
STEP 2:

1. Turn Dice Switch to the ON position.
2. Test Dice Platform by pressing to make sure the plate moves up and down.
3. Cut your vegetable so that it can fit in the Food Holder. Food should be short enough for Hand Guard to completely rest on the Food Holder



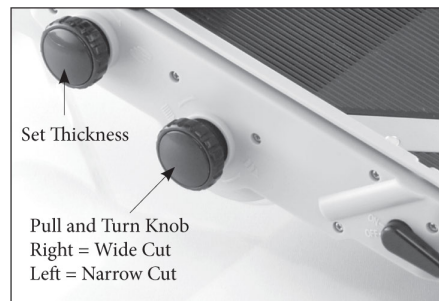
STEP 3:

1. Place the Food Holder at the bottom of the Dice Platform.
2. Face the groove toward one of the shapes and press the Hand Guard all the way down.



SLICING

Place vegetable in the Food Holder. Cover food and press down with the Hand Guard. Align Food Holder groove to the center and slide back and forth to slice. To adjust thickness, turn the Thickness Dial clockwise for thicker slices, or counter-clockwise for thinner slices.



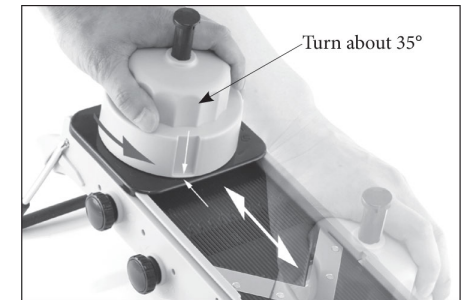
JULIENNE CUTS (WIDE & NARROW)

First select your desired slicing thickness with the Thickness Dial (turn clockwise for thicker slices, or counter-clockwise for thinner slices.). Set the julienne blade by pulling the Julienne Dial out and turning it.



STEP 4:

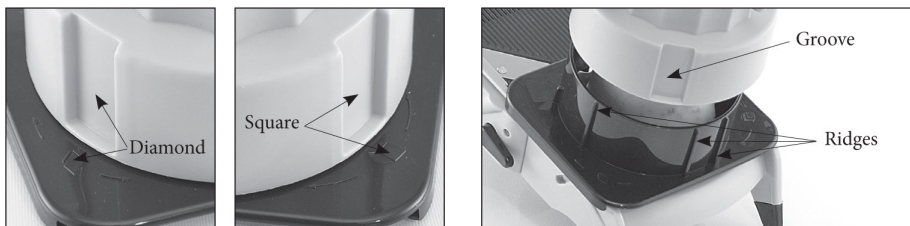
1. Start by turning the Hand Guard clockwise until the groove hits the Food Holder's ridge.
2. Pull the Food Holder to the top of the Slice Platform to get the first julienne cut.



STEP 5 :

1. At the top of the Slice Platform, turn the Hand Guard counter-clockwise until the groove hits the other side of the Food Holder.
2. Push forward and make the second cut. Repeat step 4 and 5 until finished.

DICING (SQUARE OR DIAMOND)



STEP 1: Choose the type of dicing you want to do (square or diamond) by facing the groove on the Hand Guard toward one of the shapes on the Food Holder.

- ◆ Clean the unit soon after each use. This greatly simplifies the cleaning process. (WARNING: Do not use abrasive cleansers. The unit is dishwasher safe) .
- ◆ **WARNING:** Blades are extremely sharp, handle with care, Do not place fingers and hands on the blade itself.
- ◆ Wash all parts in a mild soap solution or place in the dishwasher. Do not use abrasive cleansers.
- ◆ Wipe the Main unit with a soft damp cloth, if need you may place in dishwasher. Certain foods can discolor the main body and the blades. Rub it gently with a soft cloth or sponge.

Slicer for : potatoes/carrots/tomatoes/onions/cheese/fruit

- ◆ Always be extra careful when handling the blades. Blades are very sharp.
- ◆ Always be sure to cut away from your body to avoid injury.