

NINJA STORM™

QB751Q
Series

OWNER'S GUIDE



IMPORTANT SAFEGUARDS

HOUSEHOLD USE ONLY • READ ALL INSTRUCTIONS BEFORE USE

 **Read and review instructions for operation and use.**

 **For indoor and household use only.**

When using electrical appliances, basic safety precautions should always be followed, including the following:

WARNING: TO REDUCE THE RISK OF FIRE, ELECTRIC SHOCK OR INJURY:

- 1 Read all instructions prior to using the appliance and its accessories.
- 2 Carefully observe and follow all warnings and instructions. This unit contains electrical connections and moving parts that potentially present risk to the user.
- 3 Take your time and exercise care during unpacking and appliance setup. This appliance contains sharp, loose blades that can cause injury if mishandled.
- 4 Take inventory of all contents to ensure you have all parts needed to properly and safely operate your appliance.
- 5 Blades are sharp. Handle carefully.
- 6 Turn the appliance **OFF**, then unplug the appliance from the outlet when not in use, before assembling or disassembling parts, and before cleaning. To unplug, grasp the plug by the body and pull from the outlet. **NEVER** unplug by grasping and pulling the flexible cord.
- 7 Before use, wash all parts that may contact food. Follow washing instructions covered in this instruction manual.
- 8 **DO NOT** use this appliance outdoors. It is designed for indoor household use only.
- 9 **DO NOT** operate any appliance with a damaged cord or plug, or after the appliance malfunctions or is dropped or damaged in any manner. This appliance has no user-serviceable parts. If damaged, contact SharkNinja for servicing.
- 10 Extension cords should **NOT** be used with this appliance.
- 11 **DO NOT** allow children to operate this appliance or use as a toy. Close supervision is necessary when any appliance is used near children.
- 12 This appliance is **NOT** intended to be used by people with reduced physical, sensory, or mental capabilities, or lack of experience and knowledge, unless they are given supervision or instruction concerning use of the appliance by a person responsible for their safety.
- 13 Before each use, inspect blade assemblies for damage. If a blade is bent or damage is suspected, contact SharkNinja to arrange for replacement.
- 14 **DO NOT** allow the unit or the cord to hang over the edges of tables or counters. The cord may become snagged and pull the appliance off the work surface.
- 15 **DO NOT** allow any part of the unit to contact hot surfaces, including stoves and other heating appliances.
- 16 **DO NOT** place on or near a hot gas or electric burner or in a heated oven.
- 17 **ALWAYS** use the appliance on a dry and level surface.
- 18 Keep hands, hair, and clothing out of the container when loading and operating.
- 19 **NEVER** leave the appliance unattended while in use.
- 20 **ONLY** use attachments, including canning jar, and accessories that are provided with the product or are recommended by SharkNinja. The use of attachments not recommended or sold by SharkNinja may cause fire, electric shock, or injury.
- 21 During operation and handling of the appliance, avoid contact with moving parts.
- 22 To protect against electric shock, **DO NOT** immerse cord, plug or any part of the main unit in water or any other liquids.


- 23 Check that the voltage indicated on the rating plate corresponds with that of the local network before connecting the appliance to the mains power supply.
- 24 **DO NOT USE** if the appliance is not working, has been dropped, dropped into water, damaged or left outdoors.
- 25 **NO SERVICEABLE PARTS.** Incorrect re-assembly or repair can cause a risk of electrical shock or injury to persons when the appliance is used. Contact Customer Service.
- 26 This appliance contains no user-serviceable parts. All repairs should only be carried out by a qualified engineer. Improper repairs may place the user at risk of harm.
- 27 Remove the power cord from the mains power supply when not in use, before assembling or disassembling parts, and before cleaning.
- 28 **DO NOT** abuse the power cord. Never carry the appliance by the power cord. To unplug the appliance from the mains power supply, grasp the plug and not the cord and pull to disconnect.
- 29 **DO NOT** leave the appliance unattended whilst connected to the mains power supply.
- 30 **DO NOT PROCESS HOT FOODS OR HOT LIQUIDS.** Allow hot ingredients to cool before processing.
- 31 **DO NOT** remove the power pod before the chopping blades have stopped turning.
- 32 Chopping blades are sharp, handle with care, especially when removing the blade from the bowl, emptying the bowl and during cleaning. When handling the chopping blades, always hold by the plastic shaft.
- 33 **DO NOT** attempt to sharpen blades.
- 34 **DO NOT** expose the containers and accessories to extreme temperature changes. They may experience damage.
- 35 **DO NOT** use containers if they are cracked or chipped.
- 36 **DO NOT** use the appliance if chopping blades are bent or damaged.
- 37 Keep hands and utensils out of containers while chopping to reduce the risk of severe personal injury or damage to the blender/food chopper. A scraper may be used **ONLY** when the blender or processor is not running. When using the processor, always use food pusher to add food. **NEVER** add food by hand.
- 38 Immediately release the On/Off pulse button on the power pod in the event that the appliance malfunctions during use.
- 39 To reduce the risk of injury, **NEVER** operate the appliance without the splashguard and bowl in place; **DO NOT** try to defeat the interlock mechanism; make sure that the cutting blades are properly assembled before operating the appliance.
- 40 **DO NOT** use appliance for other than intended use.
- 41 **DO NOT** operate the appliance with an empty container.
- 42 **DO NOT** fill containers past the MAX FILL or MAX LIQUID lines.
- 43 If the appliance overheats, a thermal switch will become activated and shut off the motor. To reset, unplug the appliance and let it cool down for approximately 10 minutes before using again.
- 44 Be certain cover is secured in place before operating the appliance.
- 45 **DO NOT** microwave any containers or accessories provided with the appliance.
- 46 **DO NOT** perform grinding operations with chopping blades.
- 47 **DO NOT** process dry ingredients without adding liquid to food chopper. The food chopper is not intended for dry chopping.

SAVE THESE INSTRUCTIONS



REGISTER YOUR PURCHASE

 registeryourninja.com

 Scan QR code using mobile device

RECORD THIS INFORMATION

Model Number: _____

Serial Number: _____

Date of Purchase: _____
(Keep receipt)

Store of Purchase: _____

THIS MANUAL COVERS MODELS:

- QB751QOR
- QB751QYL
- QB751QNV
- QB751QBLU
- QB751QLV
- QB751QCG
- QB751QGR
- QB751QWH
- QB751QPIN
- QB751QBLK
- QB751QTRQ
- QB751QCNM
- QB751QRD

TECHNICAL SPECIFICATIONS

Voltage: 120V~, 60Hz

Watts: 450W

Getting Started 6

Before First Use 7

Assembling & Using the Pitcher 8

Helpful Tips 9

Cleaning & Maintenance 9

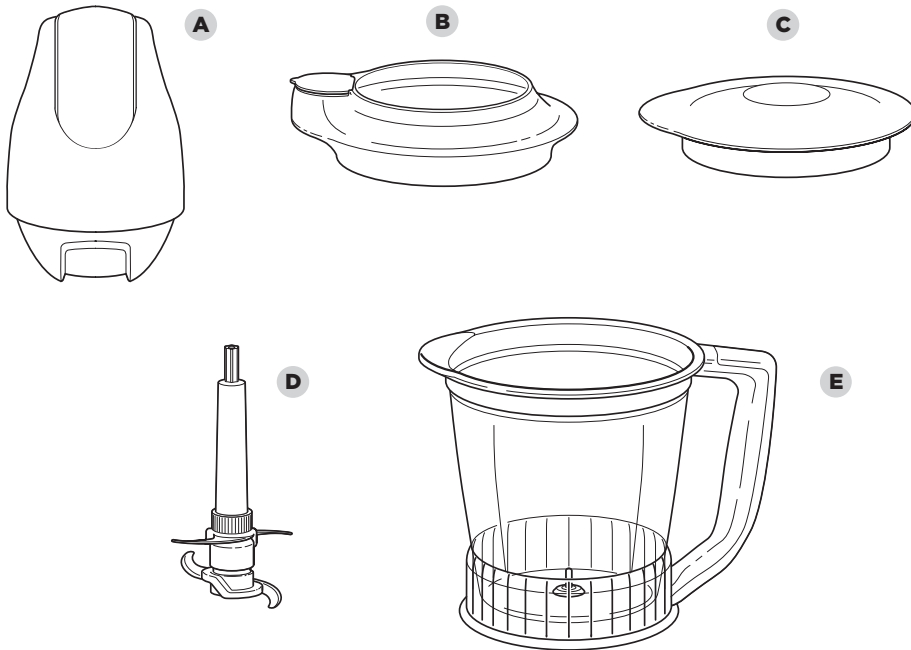
Troubleshooting Guide 10

Warranty 11

TIP: You can find the model and serial numbers on the QR code label on the back of the unit by the power cord.

GETTING STARTED

The NinjaStorm™ is an indispensable kitchen tool that is perfect for blending, whipping, ice-crushing, and food processing—all in the 40 oz. pitcher. For best results, be sure to carefully read all warnings and instructions before using this appliance.



A Master Pod

B Splashguard

C Pitcher Storage Lid

D 40 oz. 4-Blade Assembly

E 40 oz. Pitcher with Nonslip Base

F Power Cord (not shown)

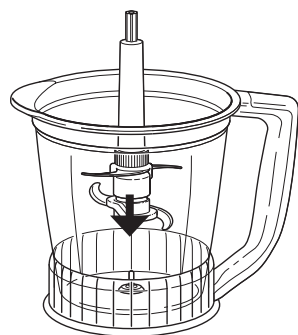
BEFORE FIRST USE

- 1 Remove all packaging material and labels from the appliance. Separate all parts.
- 2 Wash the lid, splashguard, pitcher, and blade assembly in warm, soapy water. When washing the blade assembly, use a dish-washing utensil with a handle to avoid direct hand contact with blades.
- 3 Handle the 40 oz. 4-Blade Assembly with care to avoid contact with sharp edges. Rinse and air-dry thoroughly.
- 4 The pitcher, lid, splashguard, and blade assembly are all dishwasher safe. It is recommended that the lid, splashguard and blade assembly be placed on the top rack. Remove the blade assembly from the pitcher before placing in the dishwasher.
- 5 Wipe the Master Pod clean with a damp cloth.

ASSEMBLING & USING THE PITCHER

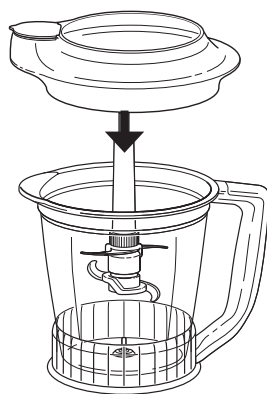
IMPORTANT: Review the important safety instructions on pages 2 and 3 before proceeding.

- 1 Place the pitcher on a clean, dry, level surface.
- 2 Holding the blade assembly by the shaft, place it onto the spindle pin inside the pitcher.

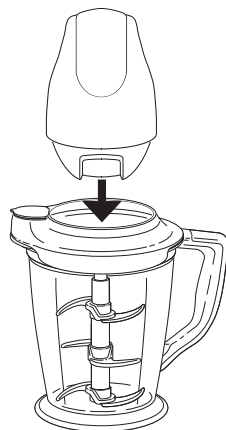


- 3 Place ingredients in the pitcher.

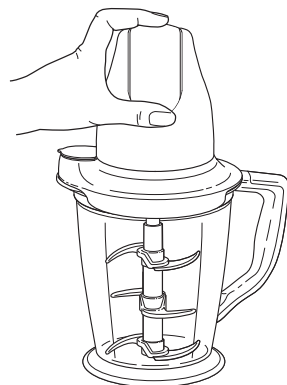
IMPORTANT: Always make sure the blade assembly is in place before adding any ingredients.



- 4 Place the splashguard on top of the pitcher.



- 5 Place the Master Pod on top of the splashguard, making sure it is securely in place.



- 6 Plug the unit into an electrical outlet. Hold the Master Pod securely in place while operating. Hold the pitcher firmly while pressing the On/Off pulse button to ensure the unit stays in place. To pulse, press the On/Off pulse button located on the top of the Master Pod.

NOTE: DO NOT operate the appliance continuously for more than 15 seconds.

NOTE: For best results, use short pulses when pressing the On/Off button. If ingredients stick to the sides of the pitcher, stop the appliance, and remove the Master Pod and the splashguard. Use a spatula to dislodge the ingredients, then replace the splashguard and Master Pod. Continue processing.

- 7 Stop pressing the button when desired consistency is reached.
- 8 Make sure the blade assembly has stopped completely before removing the Master Pod.
- 9 Use the pour spout to empty liquid contents. For thicker consistencies, first remove the splashguard and blade assembly (by its shaft), then empty contents of the pitcher.

HELPFUL TIPS

- 1 The 40 oz. 4-Blade Assembly can be used for chopping meat, fish, vegetables, cheese, etc.
- 2 For mincing, chopping, and pureeing, increase the length of pulses.
- 3 For coarse chopping, use short, quick pulses and monitor food texture.
- 4 Pre-cut larger pieces to make them fit into the pitcher. When chopping hard foods (e.g., meat, cheese) cut into 1-inch cubes.
- 5 To crush ice into snow, start by using short pulses to break up large chunks. Also, don't use ice that has been sitting out or has started to melt. Use ice straight from the freezer, and make sure the pitcher is completely dry before placing ice in it.

CLEANING & MAINTENANCE

CLEANING

- 1 Separate all parts.
- 2 **Hand-Washing:** Wash the lid, splashguard, pitcher, and blade assembly in warm, soapy water. When washing the blade assembly, use a dish-washing utensil with a handle to avoid direct hand contact with blades. Handle the 40 oz. 4-Blade Assembly with care to avoid contact with sharp edges. Rinse and air-dry thoroughly.

Dishwasher: The pitcher, lid, splashguard, and blade assembly are all dishwasher safe. It is recommended that the lid and blade assembly be placed on the top rack. Ensure the blade assembly is removed from the pitcher before placing in the dishwasher.

- 3 Wipe the Master Pod clean with a damp cloth.

STORING

Store the Ninja Storm™ upright with the 40 oz. 4-Blade Assembly inside the pitcher and the splashguard and Master Pod on the pitcher. Loosely wrap the power cord around the Master Pod. **DO NOT** place anything on top. Store the rest of the attachments alongside the appliance or in a cabinet where they will not be damaged and won't cause a hazard.

TROUBLESHOOTING

- **Motor doesn't start or blade assembly doesn't rotate.**
 - Make sure the Master Pod is securely placed on the pitcher.
 - Make sure the splashguard is securely on pitcher in the correct position (align arrows).
 - Check that the plug is securely inserted into the electrical outlet.
 - Check the fuse or circuit breaker.
- **Ingredients are unevenly chopped.**

Either you are chopping too many ingredients at one time, or the pieces are too big. Process smaller amounts per batch.
- **Ingredients are chopped too finely or are too watery.**

The ingredients have been over-processed.
- **Ingredients collect on lid or sides of the pitcher.**

The mixture is too thick. Add more liquid.
- **Unit won't create snow from solid ice.**

Do not use ice that has been sitting out or has started to melt. Use ice straight from the freezer, and make sure the pitcher is completely dry before placing ice in it.

REPLACEMENT PARTS

To order additional parts and accessories, visit ninjaaccessories.com or contact Customer Service at **1-877-646-5288**.

Shark NINJA

ONE (1) YEAR LIMITED WARRANTY

The One (1) Year Limited Warranty applies to purchases made from authorized retailers of **SharkNinja Operating LLC**. Warranty coverage applies to the original owner and to the original product only and is not transferable.

SharkNinja warrants that the unit shall be free from defects in material and workmanship for a period of one (1) year from the date of purchase when it is used under normal household conditions and maintained according to the requirements outlined in the Owner's Guide, subject to the following conditions and exclusions:

What is covered by this warranty?

1. The original unit and/or non-wearable parts deemed defective, in SharkNinja's sole discretion, will be repaired or replaced up to one (1) year from the original purchase date.
2. In the event a replacement unit is issued, the warranty coverage ends six (6) months following the receipt date of the replacement unit or the remainder of the existing warranty, whichever is later. SharkNinja reserves the right to replace the unit with one of equal or greater value.

What is not covered by this warranty?

1. Normal wear and tear of wearable parts (such as blending vessels, lids, cups, blades, blender bases, removable pots, racks, pans, etc.), which require regular maintenance and/or replacement to ensure the proper functioning of your unit, are not covered by this warranty. Replacement parts are available for purchase at ninjaaccessories.com.
2. Any unit that has been tampered with or used for commercial purposes
3. Damage caused by misuse, abuse, negligent handling, failure to perform required maintenance (e.g., failure to keep the well of the motor base clear of food spills and other debris), or damage due to mishandling in transit.
4. Consequential and incidental damages.
5. Defects caused by repair persons not authorized by SharkNinja. These defects include damages caused in the process of shipping, altering, or repairing the SharkNinja product (or any of its parts) when the repair is performed by a repair person not authorized by SharkNinja.
6. Products purchased, used, or operated outside North America.

How to get service

If your appliance fails to operate properly while in use under normal household conditions within the warranty period, visit ninjakitchen.com/support for product care and maintenance self-help. Our Customer Service Specialists are also available at **1-877-646-5288** to assist with product support and warranty service options, including the possibility of upgrading to our VIP warranty service options for select product categories. So we may better assist you, please register your product online at registeryourninja.com and have the product on hand when you call.

SharkNinja will cover the cost for the customer to send in the unit to us for repair or replacement. A fee of \$19.95 (subject to change) will be charged when SharkNinja ships the repaired or replacement unit.

How to initiate a warranty claim

You must call **1-877-646-5288** to initiate a warranty claim. You will need the receipt as proof of purchase. We also ask that you register your product online at registeryourninja.com and have the product on hand when you call, so we may better assist you. A Customer Service Specialist will provide you with return and packing instruction information.

How state law applies

This warranty gives you specific legal rights, and you also may have other rights that vary from state to state. Some states do not permit the exclusion or limitation of incidental or consequential damages, so the above may not apply to you.

SharkNinja Operating LLC
US: Needham, MA 02494
1-877-646-5288
ninjakitchen.com

Illustrations may differ from actual product. We are constantly striving to improve our products, therefore the specifications contained herein are subject to change without notice.

NINJA is a registered trademark of SharkNinja Operating LLC.

NINJA STORM is a trademark of SharkNinja Operating, LLC.

For SharkNinja U.S. patent information, visit sharkninja.com/uspatents/

© 2020 SharkNinja Operating LLC

PRINTED IN CHINA

QB751QSeries_IB_MP_Mv2



@ninjakitchen