

Quickstart Guide

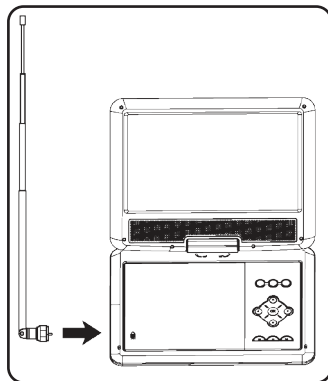


TV Antenna Installation

This player can receive ATSC TV signals after installing the TV antenna. The player includes two TV antennas.

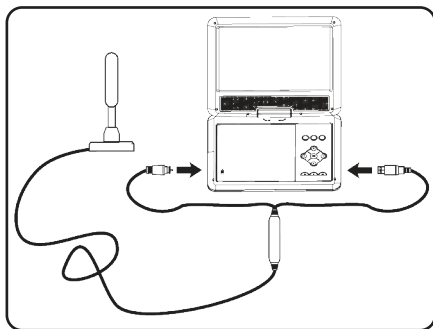
After attaching either antenna, position and adjust until you receive a clear signal.

1. Connect the **Telescopic antenna** directly to the TV Antenna Input on the player.



or

2. Connect one end of the **Amplified antenna** cable to the TV Antenna Input on the player and the other end to the USB port.



Auto Scanning for Channels

The Auto Channel Scan must be run before any channels can be viewed on the television. Initial channel scanning process may take up to 15 min.

1. Press the **Source** button to switch to TV mode.
2. Press the **Search** button to begin scanning for available channels.
3. Playback will begin on the first discovered channel after the scan completes.
4. Use the **Rew/CH-** and **FWD/CH+** buttons to change channels while watching TV.

NOTE: After the initial scan, the player will remember the discovered TV channels.

Initial System Setup for TV (ATSC)

When you press the **Menu** button on the remote while in TV mode, the following setting menu will appear on the screen. Press the **Arrow** buttons to navigate between the menu pages and press the **OK** button select and confirm your choices. Press the **Exit** button to save any setting changes and return to the previous menu screen or to exit the settings menu.

Note: This player has an Electronic Programming Guide (EPG) that can show TV programming up to 7 days in advance. However, certain TV stations may only allow the EPG to show 1 day of programming.

Quickstart Guide



Troubleshooting

If you are having trouble scanning and receiving TV channels, check for the following conditions:

- Make sure the antenna is properly connected to the unit.
- Check the positioning of the antenna. Large objects and crowded interiors can block or bounce TV signals, interrupting reception.
- Investigate possible interference. Location, proximity to cell phone and broadcast towers, or certain weather conditions can affect the availability of TV signals. Check for nearby cell towers that may overpower TV broadcasts, multiple TV broadcast towers that may compete for the same frequency, or TV broadcast towers that may be too far away to reach the antenna.
- In some instances, other electronic devices may interfere with over-the-air TV signals. Smart appliances, garage door openers, and anything that emits electromagnetic energy may interfere with antenna reception. Position the antenna angled away from sources of interference.

Contact Information

Website: www.gpx.com

Email Support: prodinfo@dpiinc.com

Email Parts: partsinfo@dpiinc.com

Phone Support: 1-888-999-4215

Warranty

For Warranty Information and the most up-to-date version of this User's Guide, go to: www.gpx.com

International Support

To download this User's Guide in English, Spanish, and French, or to get answers to frequently asked questions, visit the support section at: www.gpx.com

Para descargar este Manual del Usuario en inglés, español y francés, o para obtener respuestas a preguntas frecuentes, visite la sección de apoyo en: www.gpx.com

Pour télécharger ce guide de l'utilisateur en anglais, espagnol ou français, ou pour obtenir des réponses à des questions fréquemment posées, consultez la rubrique d'assistance sur: www.gpx.com

